



# Opportunity Neighborhoods:

Building the Foundation for Economic Mobility in America's Metros

## Webinar

March 1, 2018

Margery Austin Turner

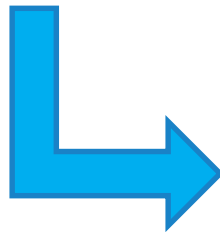
Solomon Greene

Anthony Iton

# Webinar Housekeeping



- Webinar is being recorded
- Slides and recording will be sent out after the webcast
- All participants are muted
- Type your **questions** or **comments** into the Questions box on the right. Be sure to **include your name and organization.**



Questions

Type your questions here!

Send

- Questions later? [Events@urban.org](mailto:Events@urban.org)
- #MobilityFromPoverty

# The Partners

**David T. Ellwood, Chair**  
Harvard Kennedy School

**Elisabeth Babcock**  
Economic Mobility Pathways

**Joshua Bolten**  
Business Roundtable

**Arthur C. Brooks**  
American Enterprise Institute

**William J. Bynum**  
Hope Enterprise Corporation

**Raj Chetty**  
Stanford University

**Rev. Luis Cortés, Jr.**  
Esperanza

**Jennifer L. Eberhardt**  
Stanford University

**Kathryn Edin**  
Johns Hopkins University

**Robert Greenstein**  
Center on Budget and Policy Priorities

**Cheryl L. Hyman**  
formerly City Colleges of Chicago

**Anthony B. Iton**  
The California Endowment

**Lawrence Katz**  
Harvard University

**N. Gregory Mankiw**  
Harvard University

**Ai-jen Poo**  
National Domestic Worker Alliance;  
Caring Across Generations

**john a. powell**  
Haas Institute for a Fair and Inclusive  
Society

**Cecilia Rouse**  
Princeton University

**Juan Salgado**  
City Colleges of Chicago

**Eldar Shafir**  
Princeton University

**Srinija Srinivasan**  
Loove

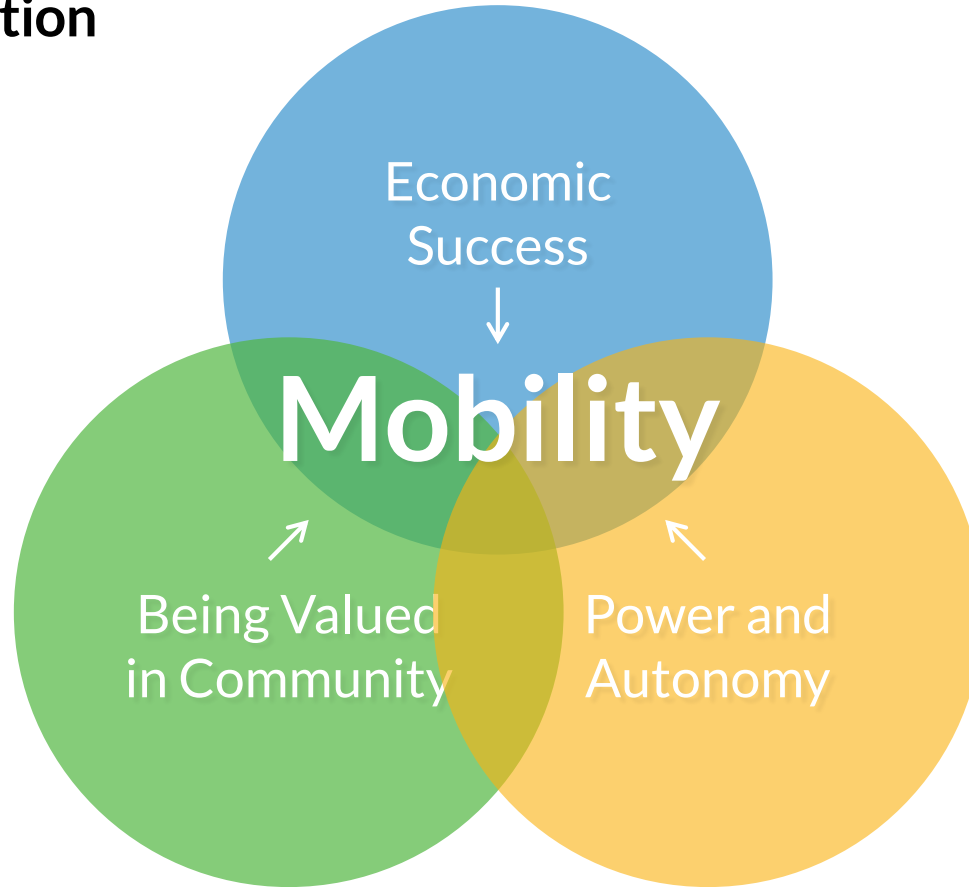
**Marta Tienda**  
Princeton University

**Jeremy Travis**  
Laura and John Arnold Foundation

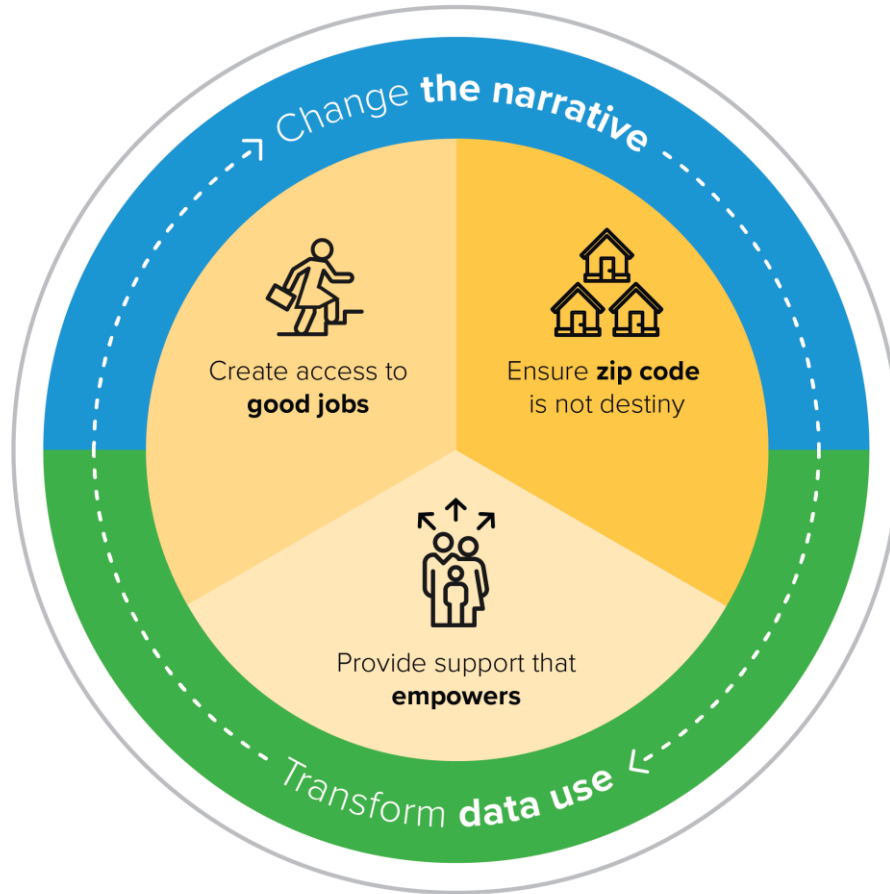
**Roxane White**  
The Aspen Institute

**Hirokazu Yoshikawa**  
New York University

# Mobility Definition



# Strategies



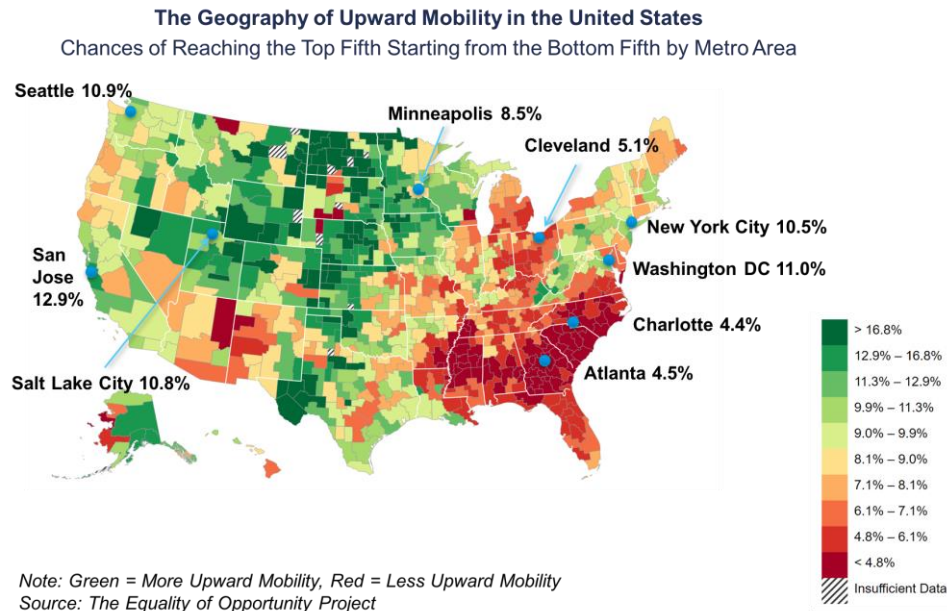
---

Every family deserves to live in a  
neighborhood that supports its well-being  
and boosts its children's chances to thrive.

---

# Unequal Landscape of Opportunity

Chances of moving from  
bottom 20% as children to top  
20% as adults



---

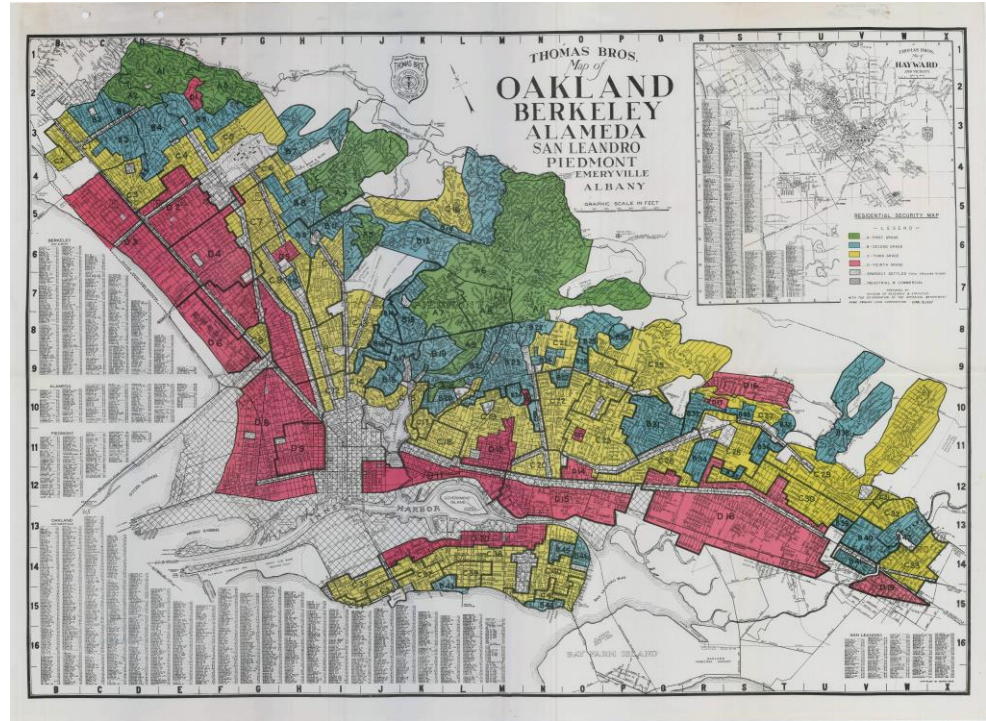
**Neighborhood disparities didn't  
happen by accident**

---



# A History of Segregation

Racially discriminatory market practices and exclusionary land-use policies have blocked low-income families and people of color





# Focusing on Place

Beginning with the settlement houses of the late 19th century, practitioners and policymakers have worked to tackle the challenges of concentrated poverty through evolving “place-based” strategies.

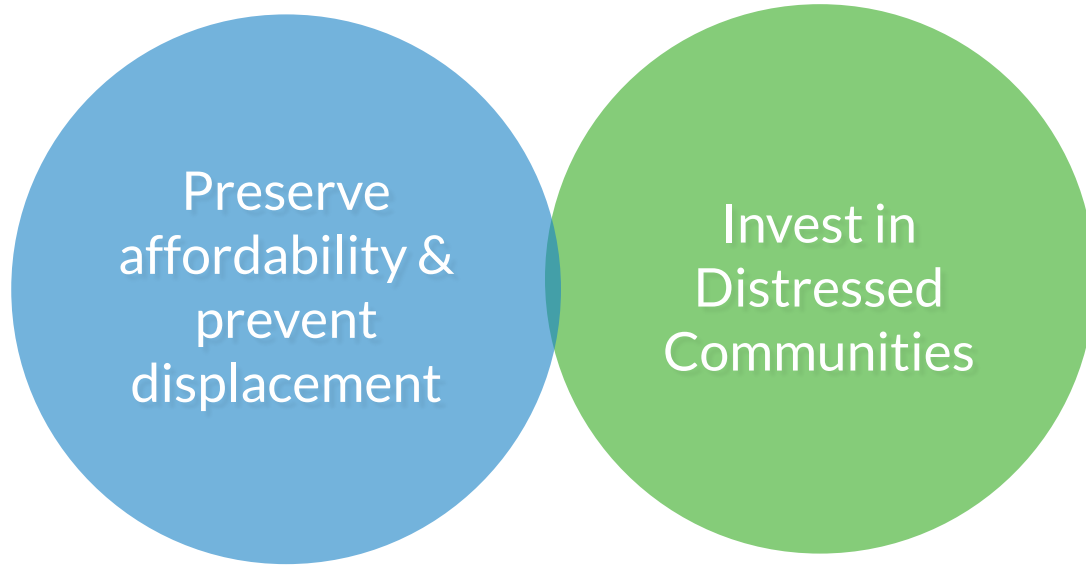


# Place-Conscious Strategies



Invest in  
Distressed  
Communities

# Place-Conscious Strategies





# Place-Conscious Strategies



Preserve  
affordability &  
prevent  
displacement

Invest in  
Distressed  
Communities

Expand  
neighborhood  
choice

# Opportunity Neighborhoods Proposal

## In a handful of metro regions

- Engage residents across the region
- Use data-driven, participatory planning
- Develop & implement “Opportunity Neighborhoods” plans

# Building Blocks of Opportunity Neighborhoods



Regional Approach



Place-Conscious



Support Empowerment



Strengthen  
Organizations



Evaluate & Define



Confront Racism



---

What would **success** look like?

---

---

Every family should be able to live in a neighborhood that supports its well-being and boosts its children's chances to thrive.

---

# Neighborhood Opportunity Score

- Create a neighborhood score based on safety & just policing, quality schools, affordable housing, health-promoting environments, access to financial services, access to jobs, access to recreational & cultural facilities
- More neighborhoods score “high”
- More low-income people and people of color live in high scoring neighborhoods

---

## **Lessons from doing place-conscious work at the ground level**

---

# Example of Place-Conscious Work

Table 1: Total Suspension Counts by Ethnicity

Ethnicity	2011–12	2016–17	Difference	Percent Difference
African American	134,064	67,945	-66,119	-49.3%
American Indian or Alaska Native	9,212	4,425	-4,787	-52.0%
Asian	14,319	8,196	-6,123	-42.8%
Filipino	5,932	2,974	-2,958	-49.9%
Hispanic or Latino	379,686	203,024	-176,662	-46.5%
Pacific Islander	4,817	2,326	-2,491	-51.7%
White	143,818	76,838	-66,980	-46.6%
Two or More Races	13,801	13,415	-386	-2.8%
Not Reported	4,053	2,702	-1,351	-33.3%
<b>Statewide Total</b>	<b>709,702</b>	<b>381,845</b>	<b>-327,857</b>	<b>-46.2%</b>

# Example of Place-Conscious Work



Release: #17-80  
November 1, 2017

Contact: Robert Oakes  
E-mail: [communications@cde.ca.gov](mailto:communications@cde.ca.gov)  
Phone: 916-319-0818

## State Schools Chief Tom Torlakson Announces Fifth Year in a Row of Declining Student Suspensions and Expulsions

SACRAMENTO—State Superintendent of Public Instruction Tom Torlakson today announced that the number suspended and expelled in California public schools has declined for the fifth year in a row, showing that effort educators to improve attendance by using more engaging instruction and effective discipline are making significant progress.

From the 2011-12 school year to 2016-17, suspensions declined by a remarkable 46 percent, meaning there were fewer suspensions in 2016-17 than in 2011-12. (See Table 1).

Similarly, expulsions decreased by 42 percent, dropping from about 9,800 to 5,700, a difference of about 4,100. (See Table 3).

The figures come from data collected by the California Department of Education (CDE) and are the most comprehensive statistics in the nation. The data, which covers both 2015-16 and 2016-17, provides detailed information on suspension rates of numerous student groups, including males, females, Latinos, whites, African-American, and students with disabilities.

Table 1: Total Suspension Counts by Ethnicity

Ethnicity	2011–12	2016–17	Difference	Percent Difference
African American	134,064	67,945	-66,119	-49.3%
American Indian or Alaska Native	9,212	4,425	-4,787	-52.0%
Asian	14,319	8,196	-6,123	-42.8%
Filipino	5,932	2,974	-2,958	-49.9%
Hispanic or Latino	379,686	203,024	-176,662	-46.5%
Pacific Islander	4,817	2,326	-2,491	-51.7%
White	143,818	76,838	-66,980	-46.6%
Two or More Races	13,801	13,415	-386	-2.8%
Not Reported	4,053	2,702	-1,351	-33.3%
<b>Statewide Total</b>	<b>709,702</b>	<b>381,845</b>	<b>-327,857</b>	<b>-46.2%</b>

# Problems

## Los Angeles Times

When California schools call cops for small infraction  
it disproportionately hurts minority students, civil rights study find

## The Fresno Bee



Fresno Unified teachers demand stricter discipline

## The Fresno Bee



Fresno Unified teachers, trustees demand  
stricter discipline in schools

## Los Angeles Times

Black preschool kids get suspended much more frequently than  
white preschool kids, U.S. survey says

## takepart

Suspending Teens Ruins Lives and  
Costs Taxpayers \$35 Billion a Year

# Victories

## The Fresno Bee



**'Schools Not Prisons' tour aims to curb  
school discipline, incarceration**

## The New York Times

**Courses in Manhood for African-American Boys**

## THE SACRAMENTO BEE

**Schools use alternatives to suspension,  
see student behavior improve**



**Bakersfield.com**

**Suspension, expulsion rate in Kern  
County schools decreases**



**5 ways to end the school  
to prison pipeline**





# FRESNO

THE BEST LITTLE CITY IN THE U.S.A.

VAN NESS AVE

ENTRANCE

CRESCO

CRESCO

SPEED  
LIMIT  
30



# Fresno, CA

Fresno students met with  
The California Endowment  
board



“Harsh, targeted school discipline policies and practices are getting in the way of our education.”

# Place-Conscious Practice

- Restore well-being and opportunity to distressed communities
- Opportunity barriers across multiple systems.  
(health, education, housing, employment, transportation)
- Social determinants approach looks for *root causes*.

# Root Causes

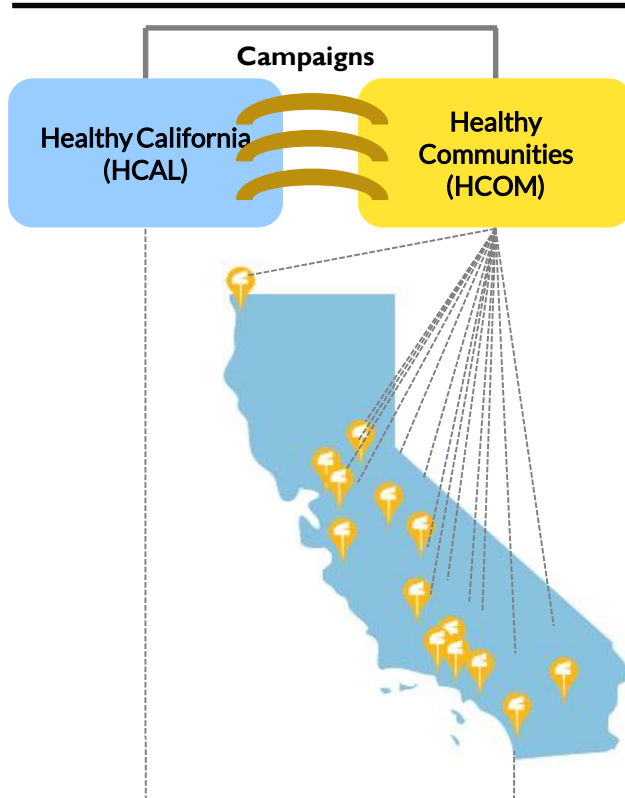
- Power and autonomy: Power imbalance between groups.
- Being valued in Community: An exclusionary narrative that devalues and dehumanizes certain populations.
- As a result, key opportunity structures (systems) are insufficiently **accessible and accountable** to many of the constituents that they were designed to serve.

# Core Principles

- Enlist the participation of those populations that are most impacted by the inequity
- Build power
- Change the narrative
- Break down silos



# Place “Conscious” Design



# Q&A

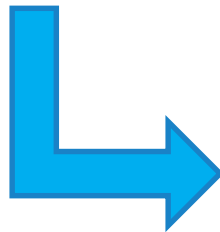




# Webinar Housekeeping



- Webinar is being recorded
- Slides and recording will be sent out after the webcast
- All participants are muted
- Type your **questions** or **comments** into the Questions box on the right. Be sure to **include your name and organization.**



Questions

Type your questions here!

Send

- Questions later? [Events@urban.org](mailto:Events@urban.org)
- #MobilityFromPoverty



MOBILITYPARTNERSHIP.ORG



MobilityPartnership  
@urban.org



@heynisha